



TOHOKU
UNIVERSITY

TOHOKU UNIVERSITY

EXCHANGE and SUMMER PROGRAMS



| Sendai : City of Trees

Sendai has a population of one million and is located 1.5 hours by bullet train from Tokyo. Combining the convenience of a modern city with abundant natural scenery, Sendai is often called “the City of Trees.” There are events throughout the year, allowing one to enjoy each of the four seasons. The most nationally famous of these events is the Tanabata Festival, in which decorations are displayed on long upright bamboo poles in the downtown area. Other events that attract large numbers of people include the Aoba Festival, which features lively dancing, and the Pageant of Starlight, in which the zelkova trees along a main boulevard are illuminated.

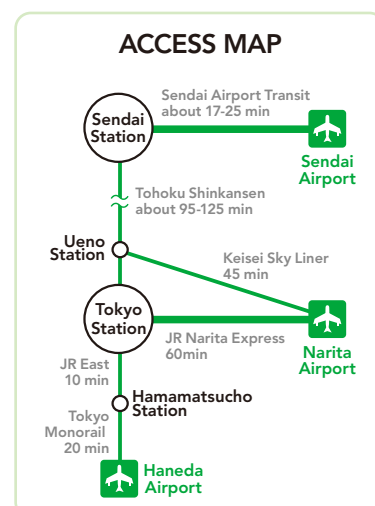
| Convenient Campuses

The campuses are conveniently connected by subway, and are located about 10 minutes from the downtown area.

Many students use bicycles to get around, enjoying the benefits of a compact and safe city. It takes about 15 minutes by bicycle to travel from the dormitories to Kawauchi Campus.

| Cost of Living

The average monthly cost of living is 80,000 yen per month for exchange students.



Tohoku University

Creating Global Excellence

**Founded
1907**

Faculties/Schools

10 Faculties
16 Graduate Schools
6 Research Institutes

Enrollment

17,885 students
11,052 Undergraduates
6,799 Graduate students As of May 1st, 2016

Number of International Students

1,944 students
From 93 counties/areas As of May 1st, 2016

Number of Partner Institutions

209 Institutions
in 36 Countries/Areas As of September 5th, 2016

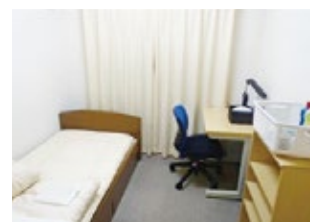
**Student to Faculty
Ratio
6:1**

Housing

Exchange students are live in the university dormitories below on a priority basis.

Dormitory fees (monthly, yen)

	Monthly Fee (Single Room)	Common Service Fee	Deposit
International House Sanjo I	13,000	1,000	30,000
International House Sanjo II	22,800		
University House Sanjo	Type A: 16,600 Type B: 17,000	Type A: 2,500 Type B: 3,100	
University House Sanjo II	18,000	2,500	



International House : http://sup.bureau.tohoku.ac.jp/housing/kaikan_en.html

University House : http://sup.bureau.tohoku.ac.jp/housing/uh_en.html

Financial Aid

Since the exchange and summer programs are based on exchange agreements between Tohoku University and the students' home institutions, exchange students are eligible for a tuition waiver. Although the students themselves should basically bear the cost of living, they are eligible to apply for the JASSO Scholarship, which provides an allowance of 80,000 yen/month for the program period. Applicants can apply for this scholarship when they apply to a program.

Support for Students

Tohoku University provides a fully integrated and personalized support for international students such as on-campus health care, multi-lingual counseling, career guidance, and a buddy program.

Exchange Programs

Tohoku University has an extensive range of student exchange programs for students from partner universities.

Exchange Programs

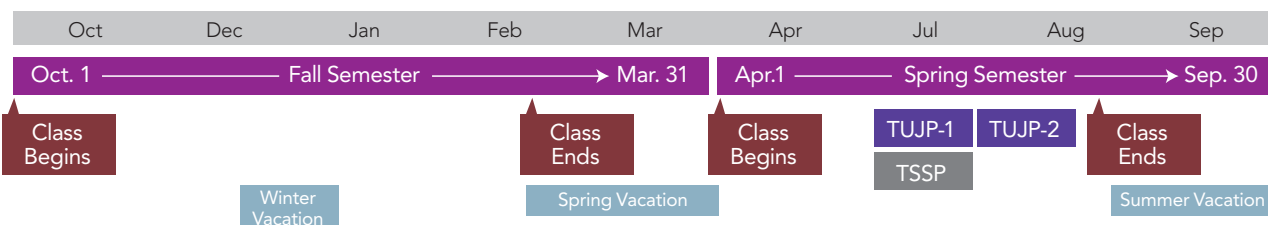
Program		Fields	Eligibility	Duration	Language
JYPE	Junior Year Program in English	Science, Engineering, Agriculture	Undergraduate (3rd or 4th year only)	2 Semesters (F+S) 1 Semester (F)	English
IPLA	International Program in Liberal Arts	Humanities/ Social Sciences	Undergraduate (2nd or 3rd year only)	2 Semesters (F+S) 1 Semester (F or S)	
COLABS	Cooperative Laboratory Study Program	All Natural Sciences, Engineering, Medicine, Dentistry, Pharmacy	Graduate	2 Semesters (F+S, S+F) 1 Semester (F or S)	
DEEP- Bridge	Direct Enrollment Education Programs (Humanity/ Social Science)	Humanities/ Social Sciences	Auditing Students Undergraduate or Graduate	2 Semesters (F+S) 1 Semester (F or S)	English & Japanese
			Research Students Graduate		
DEEP	Direct Enrollment Education Programs (Natural Sciences)	All Natural Sciences, Engineering, Medicine, Dentistry, Pharmacy	Auditing Students Undergraduate or Graduate	2 Semesters (F+S, S+F) 1 Semester (F or S)	
			Research Students Graduate		

F : Fall (Oct. – Feb.) / S : Spring (Apr. – Aug.)

Summer Programs

Program		Fields	Eligibility	Duration	Language
TUJP	Tohoku University Japanese Program	Japanese Language, Culture and Society	Undergraduate	2 weeks 1: Early July – Mid July 2: Mid July – Early August	English & Japanese
TSSP	Tohoku University Science Summer Program	Science, Engineering		2 weeks Early July – Mid July	English

Academic Calendar



Eligibility for Application

Students wishing to apply must satisfy the following conditions to be eligible for enrollment in the programs:

- 1) The student must be enrolled in his/her home institution as a regular student.
- 2) The home institution must have a formal student exchange agreement with Tohoku University.

How to Apply

Students should contact their exchange program coordinator about the application and selection process.

Application materials must be submitted only through the coordinator at the student's home institution.



⇒ JYPE Junior Year Program in English

I Program Outline

The core of this program is the Individual Research Training course. Students will research current topics related to their fields of study with the support of their assigned research groups.

The program also offers courses on language, culture and society, aimed at promoting understanding of Japanese language and social customs. Cultural and intellectual exchange with professors and students is an integral part of this program and will be accomplished through class work and participation in group activities.

I Eligibility

Junior or Senior

Home institutions with university-level or department-level agreements with Tohoku University are eligible.

I Requirement for Completion

13 credits or more, including 5 credits from the Individual Research Training course each semester.

I URL

<http://www.insc.tohoku.ac.jp/english/exchange/jype/>



Christian Dale Ilaya Kempis
(University of California, Santa Cruz, U.S.A.)

I have made numerous lifelong friends among both Japanese and International students, and I have gained invaluable research experience and knowledge in my field. My laboratory professors kept me engaged in exciting and meaningful

work and my fellow lab mates were extremely helpful and equally friendly. Tohoku University has enabled me as a student to gain many amazing experiences that I otherwise would not have been able to have at my home university. If anyone asked me if studying abroad was a great idea I would tell them, "YES! DO IT AT TOHOKU!"



Marisa Zengerle
(Technical University of Munich, Germany)

The JYPE program was organized very well and I took some very good lectures in my field of study in small classes, had an intense Japanese language class and was also able to get to know the Japanese culture in two culture classes. Apart from

that I had an interesting time with nice laboratory work where I also enjoyed my time with my open and kind lab-mates who were willing to help me whenever I needed their support.

The biggest pleasure was to meet and make friends with people from all over the world. You don't only get to know the Japanese culture, you also learn a lot about different cultures from all continents.

⇒ IPLA International Program in Liberal Arts

I Program Outline

IPLA provides an opportunity for students to study a variety of Liberal Arts classes taught in English, including Economics, Management, Education, Law, History, and Literature. The program also offers Japanese language and culture classes designed to assist students in understanding Japan in depth. Cultural and intellectual exchange with Japanese students is an important part of the program and is achieved through frequent interactions both in classes and in extracurricular activities. Committed faculty, staff, and the student support group, "IPLANET" provide extensive support for IPLA students throughout the academic year.

I Eligibility

Sophomore and Junior

Home institutions with university-level agreements with Tohoku University are eligible.

I Requirement for Completion

13 credits or more each semester including mandatory Japanese and elective courses.

I URL

<http://www.insc.tohoku.ac.jp/english/exchange/ipla/>



Dang Thi Hien
(Foreign Trade University, Vietnam)

No words can express how wonderful my one-year exchange in IPLA was, but undoubtedly, it was unforgettable. With IPLA, my dream to experience Japanese traditional unique culture came true, and now I even can perform a traditional "Suzume Odori" dance

or arrange flowers in Japanese style. Besides, I gained such a lot of precious academic knowledge, and especially my Japanese skills were much improved.

And what's more important is the friends I made from all over the world. I can say for sure that they made my one year special. And whenever you need help, all the staff and IPLANET (the student support group) will always be there for you.



Gustav Lesley
(Stockholm University, Sweden)

Since I came to Japan, I have been able to get a lot of new experiences, which I never thought I would get in my whole life. IPLA gathers students from around the world, which makes it possible for you to communicate with the whole world at

one place. IPLA has not only improved my Japanese language skills and deepened my understanding for the Japanese culture and society; it has helped me grow as a human being. I now have more courage, and am now able to communicate with people from all over the world. The IPLA-program has changed my life completely!

➔ DEEP Direct Enrollment Education Program for Natural Science Students

I Program Outline

DEEP for Natural Science Students allows international students to take classes and perform research alongside Japanese students. Undergraduates will be able to experience the wide range of fields and highly specialized classes Tohoku University offers through taking General Education and Specialized Classes. Graduates will participate in world-class research through their departments' activities in addition to attending lectures. International students will be matched with supervising professors in accordance with their academic interests.

I Requirement for Completion

Undergraduate students: 13 credits or more each semester

Graduate students: 30 ECTS equivalent credits (750 school hours) or more each semester.

I URL

<http://www.insc.tohoku.ac.jp/english/exchange/deep-u/>



Joanna Seiller Solange
(Institut National des Sciences Appliquées de Lyon, France)

Studying in Tohoku University under the DEEP program was truly the best experience in my life. Not only did I get the chance to discover university life in Japan, but I could also enjoy living in a multicultural environment, meeting

students from all over the world. It allowed me to pursue research but also to take classes in a variety of engineering fields. Everything was well organized from my arrival procedures to my departure so that I never had to worry about my life here. Sendai is a wonderful and pretty city to live in.



Xu Shen
(University of Science and Technology Beijing, China)

I absolutely have a bright memory of the one-year stay in Tohoku University through the DEEP program, and I must say that this experience somewhat changed my life. I was impressed by the enthusiasm of my Japanese friends. They were always warm-hearted and caring about me. I made many international friends and tasted the Japanese culture, which not only broadened my horizon but also brought me motivation towards a better future. More importantly, the DEEP programs provided me opportunities for deep involvement in laboratory work, training me with experimental skills and guiding me to a cutting-edge research field.

★NEW★ 2016 Fall

➔ DEEP-Bridge Direct Enrollment Education Program for Humanity/Social Science Students

I Program Outline

DEEP-Bridge is an exchange program for students in humanities and social sciences who have a JLPT rating of N3 or higher. Participants can take Japanese language and multicultural classes that match their individual levels. Those with a JLPT rating of N1, or Level 6 on Tohoku University's Japanese Placement Test, can take General Education or Specialized Classes offered in humanity/social science faculties together with Japanese students.

I Requirement for Completion

Undergraduate students: 13 credits or more each semester

Graduate students: A research report must be submitted to the Academic Adviser.

I URL

<http://www.insc.tohoku.ac.jp/english/exchange/deep-bridge/>



➔ COLABS Cooperative Laboratory Study Program

I Program Outline

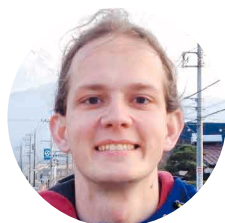
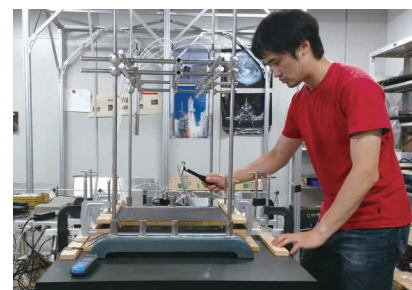
COLABS is a graduate-level research oriented program that gives international students the opportunity to take scientific research training in their assigned research laboratory as well as courses taught in English at Tohoku University. COLABS offers a wide range of research topics in all fields of natural science and students are encouraged to conduct their research in new, interdisciplinary, scientific fields.

I Requirement for Completion

30 ECTS equivalent credits (750 school hours) or more each semester.

I URL

<http://www.insc.tohoku.ac.jp/english/exchange/colabs/>



Julian Rick
(Technical University of Dortmund, Germany)

Participating in COLABS has helped me to improve my research skills and get insights into academic fields I was previously unacquainted with. My professor, the other laboratory members and my teachers were all very kind and offered me their help. Japanese society and the style of

working differ greatly from what I knew from Europe, however, the overall experience has been very pleasant and interesting. The city of Sendai is very nice to live and study in as it is not as crowded as the bigger Japanese cities. Furthermore, there are many places to see and to explore in the Tohoku area.



Yizhou Yang
(Beijing University of Technology, China)

The one year exchange experience in Sendai is unforgettable. Studying here, my research went well under the supervision from my Professor. The research collaboration with doctor students leads to a clear research approach and proper pace of progressing in every step, which all enabled me to get good results.

Living in Sendai, a peaceful and beautiful city, brought me many good friends from many countries and also brought me countless happy times with lab mates and friends. The international activities, symposiums and field trips broadened my horizon and provided opportunities to experience Japan's traditional culture and innovative development.

Summer Programs

I How to Apply

Applications must be submitted through the international affairs office of the partner universities.

I Fees

Participants must bear the program fee, accommodation, meals, transportation and insurance.

I Financial Aid

Applicants are eligible to apply for the JASSO Scholarship for Short-term Study in Japan, which provides an allowance of 80,000 yen. Applicants will be asked to indicate their interest at the time of application.



➔ TUJP Tohoku University Japanese Program

I Program Outline

TUJP is for undergraduates who have a strong interest in Japanese language and culture. The proficiency-based Japanese language classes as well as special seminars are designed to help participants understand Japan in depth. Various activities such as field trips, service-learning opportunities, home-stays, and interactions with Japanese students provide the participants many eye-opening experiences.

I Fields

Japanese Language, Culture and Society

I Language

English and Japanese

I Credits Awarded

Participants who successfully complete the program will be eligible for 4 ECTS equivalent (100 school hours).

I URL

<http://www.insc.tohoku.ac.jp/english/short/tujp/>



➔ TSSP Tohoku University Science Summer Program

I Program Outline

This 2-week summer program is designed for undergraduates majoring in science and engineering, and offers cutting edge, advanced classes in these fields. Our aims are to provide students with insight into what world society will need from advanced science and technology in the future and how they can contribute to society through research. The participants will be required to participate in 10 lectures and facility/laboratory visits.

At the end of the program participants will make a presentation on topics assigned by each lecturer.

I Fields

Science, Engineering

I Language

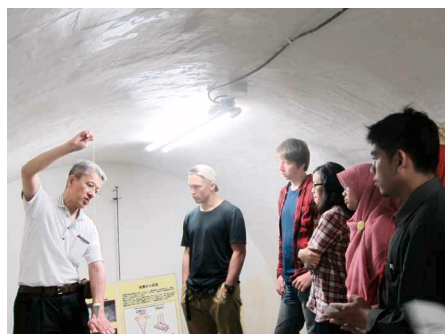
English

I Credits Awarded

Participants who successfully complete the program will be eligible for 3 ECTS equivalent (75 school hours).

I URL

<http://www.insc.tohoku.ac.jp/english/short/tssp/>





GLOBAL LEARNING CENTER TOHOKU UNIVERSITY

41 Kawauchi, Aoba-ku Sendai, Miyagi 980-8576 JAPAN
<http://www.insc.tohoku.ac.jp/english/>
Information in this material are subject to change.

